

01/05
H/w
P118

④

L W

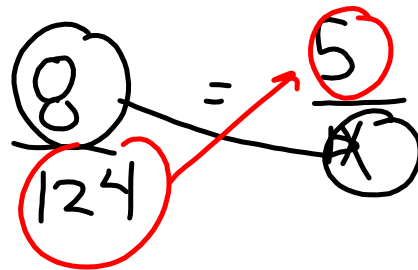
8 : 5 → width

↑

length

124

?



$$(8)(x) = (124)(5)$$

$$8x = 620$$

$$\frac{8x}{8} = \frac{620}{8}$$

$$x = 77.5$$

The width of the rectangle is 77.5m.

⑥

| P. #1 | : | P. #2 |
|-------|---|--------|
| 3 | : | 5 |
| ? | : | \$1000 |

$$\frac{3}{x} = \frac{5}{4000}$$

$$(3)(4000) = (5)(x)$$

$$12000 = 5x$$

$$\frac{12000}{5} = \frac{5x}{5}$$

$$2400 = x$$

The other partner will receive
\$2400

Tuesday, Jan 5th

Percent

examples taken from H/O p 119

ex Total question = 20

$$\text{Mark} = 85\% = \frac{85}{100}$$

$$\frac{85}{100} = \frac{x}{20}$$

$$(85)(20) = (100)(x)$$

$$1700 = 100x$$

$$\frac{1700}{100} = \frac{100x}{100}$$

Nicole answered $17 = x$

17 question correctly on the test.

①

720 Kids present

$$\hookrightarrow 96\% = \frac{96}{100}$$

Total Kids?

$$\frac{720}{x} = \frac{96}{100}$$

$$\frac{720}{x} = \frac{24}{25}$$

$$(720)(25) = (24)(x)$$

$$18000 = 24x$$

$$\frac{18000}{24} = \frac{24x}{24}$$

The total enrollment 750 = x
at the school is 750 students.